



生产日期

Production date

检验员

Inspector

检验结果

Inspection result

本产品经检验符合规定的质量标准，准予出厂。

This product was tested in accordance with standard, granted.

托菲传感技术（上海）股份有限公司

上海市虹口区水电路1422号2号楼8层

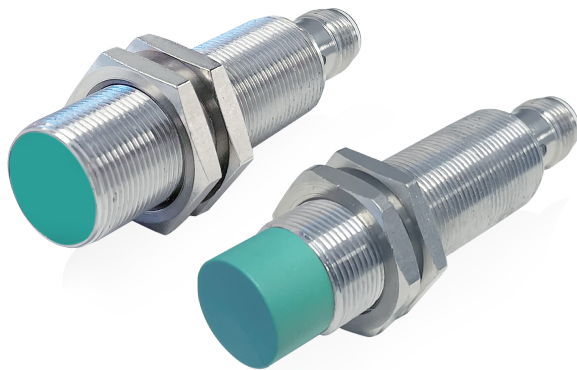
TOFI Sensing Technology (Shanghai) Co., Ltd

Floor 8th, Building 2, No.1422, Shuidian Road, Hongkou District

Tel: +86 21 65311020 E-mail: tofi@tofi-tech.com Internet: www.tofi-tech.com



编码器
传感器



电感式接近传感器

Inductive proximity sensor

产品使用说明书

Product instructions

本安装说明全面涵盖以上系列：

请注意，图示可能与实际产品的型号、材料、颜色和接头类型上发生差异。

This installation guide covers all of the above series:

Please note that the illustration may differ from the actual product model, material, color, and connector type.

基本参数 Technical data

产品系列 Product series	I12	I18	I30
外壳直径 Dimension	M12*1/L=50mm	M18*1/L=50mm	M30*1.5/L=50mm
外壳材质 Housing material	黄铜镀镍 Brass plated with nickel		
额定工作电压 Voltage supply	10-30VDC	10-30VDC	10-30VDC
开关频率 Switching frequency	500Hz	500Hz	300Hz
额定工作距离 Sensing distance Sn	4mm±10% 8mm±10%	8mm±10% 15mm±10%	15mm±10% 22mm±10%
安装类型 Installation	齐平 Flush 非齐平 Non-flush	齐平 Flush 非齐平 Non-flush	齐平 Flush 非齐平 Non-flush

产品选择 Product Selection

M12

2米直接出线 Cable, L=2m	NPN常闭 Break function (NC)	I1250F4NCC	I1250N8NCC
	NPN常开 Make function (NO)	I1250F4NOC	I1250N8NOC
	PNP常闭 Break function (NC)	I1250F4PCC	I1250N8PCC
	PNP常开 Make function (NO)	I1250F4POC	I1250N8POC
插头, M12, 4 针 Connector M12, 4 pin	NPN常闭 Break function (NC)	I1250F4NCM12C	I1250N8NCM12C
	NPN常开 Make function (NO)	I1250F4NOM12C	I1250N8NOM12C
	PNP常闭 Break function (NC)	I1250F4PCM12C	I1250N8PCM12C
	PNP常开 Make function (NO)	I1250F4POM12C	I1250N8POM12C

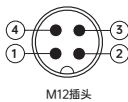
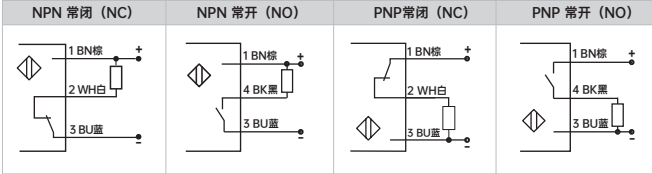
M18

2米直接出线 Cable, L=2m	NPN常闭 Break function (NC)	I1850F8NCC	I1850N14NCC
	NPN常开 Make function (NO)	I1850F8NOC	I1850N14NOC
	PNP常闭 Break function (NC)	I1850F8PCC	I1850N14PCC
	PNP常开 Make function (NO)	I1850F8POC	I1850N14POC
插头, M12, 4 针 Connector M12, 4 pin	NPN常闭 Break function (NC)	I1850F8NCM12C	I1850N14NCM12C
	NPN常开 Make function (NO)	I1850F8NOM12C	I1850N14NOM12C
	PNP常闭 Break function (NC)	I1850F8PCM12C	I1850N14PCM12C
	PNP常开 Make function (NO)	I1850F8POM12C	I1850N14POM12C

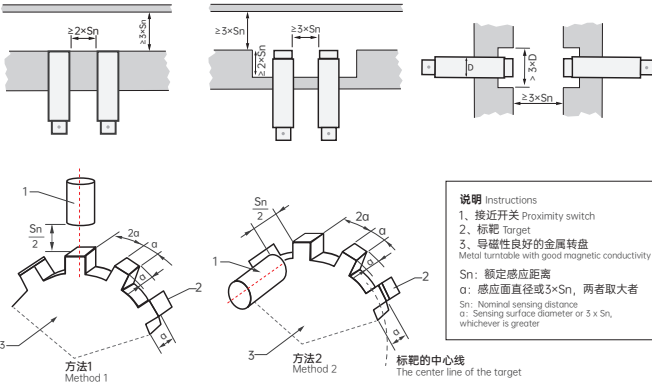
M30

2米直接出线 Cable, L=2 m	NPN常闭 Break function (NC)	I3050F15NCC	I3050N22NCC
	NPN常开 Make function (NO)	I3050F15NOC	I3050N22NOC
	PNP常闭 Break function (NC)	I3050F15PCC	I3050N22PCC
	PNP常开 Make function (NO)	I3050F15POC	I3050N22POC
插头, M12, 4 针 Connector M12, 4 pin	NPN常闭 Break function (NC)	I3050F15NCM12C	I3050N22NCM12C
	NPN常开 Make function (NO)	I3050F15NOM12C	I3050N22NOM12C
	PNP常闭 Break function (NC)	I3050F15PCM12C	I3050N22PCM12C
	PNP常开 Make function (NO)	I3050F15POM12C	I3050N22POM12C

接线图 Connection diagram



安装方式 Installation instructions



⚠ 本安装说明仅适用于电感式接近开关产品，如果违反原设计用途使用产品，用户需自行承担风险，如有更改，恕不另行通知。
Instructions in these mounting instructions apply to products from inductive proximity switches series, not for the system as a whole.
If products are used in a way for which they are not intended, this is at the user's own risk. Subject to change without notice.