

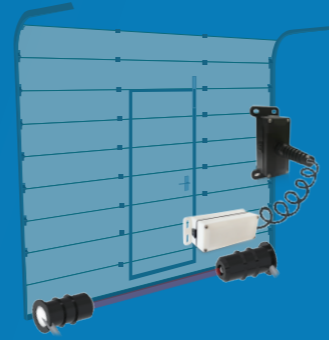
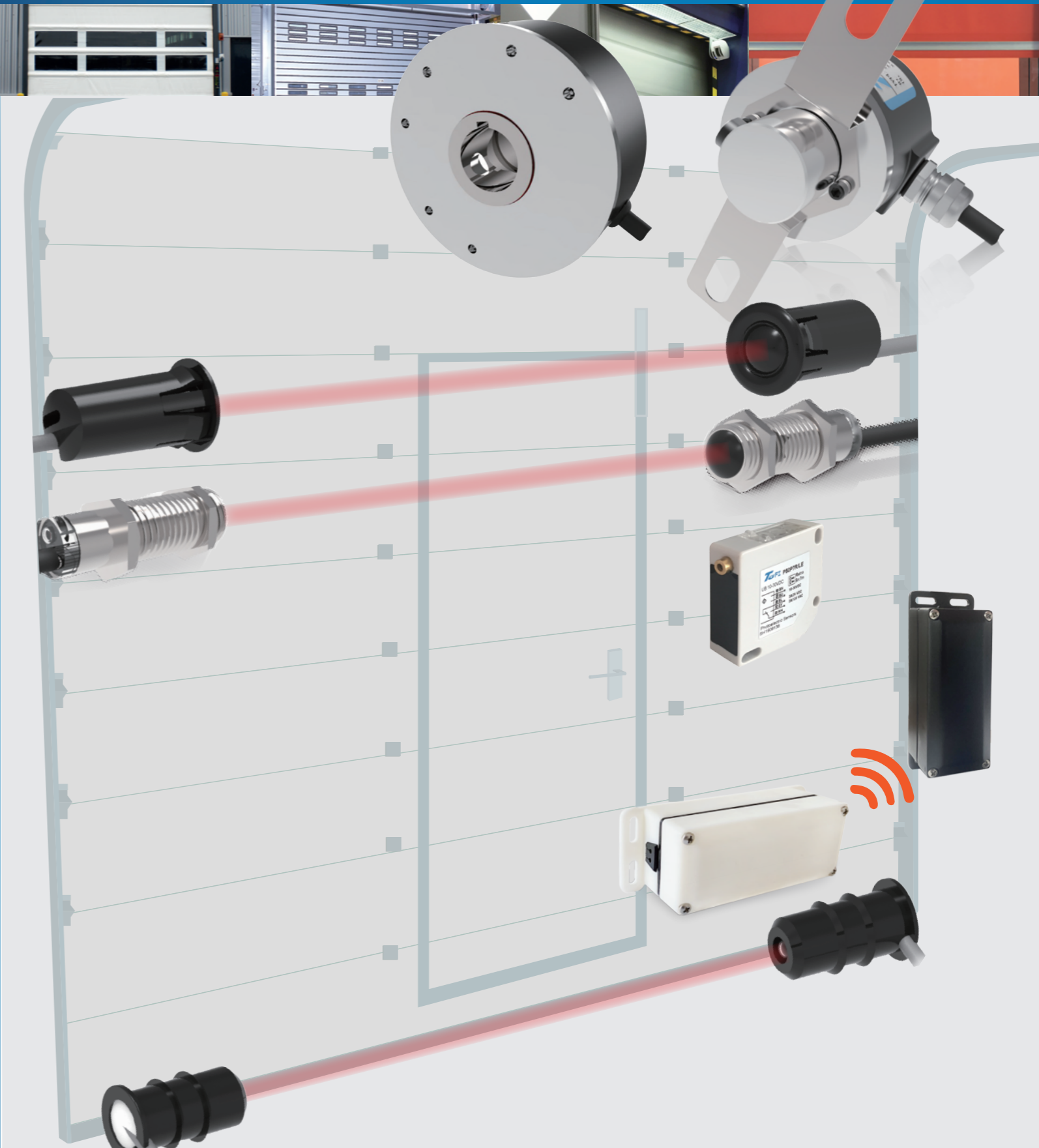
托菲传感技术

高性能工业编码器、传感器解决方案

TOFI 编码器
传感器

工业门行业编码器、传感器技术

Encoder and sensor technology for Industrial door



P18D系列漫反射光电传感器

P18D series diffuse reflection photoelectric sensor
 感应原理 背景抑制型漫反射
 Sensing principle: background suppression diffuse reflection
 类型 TOF测距反射式
 Type: TOF Ranging Reflective
 波长 940nm
 Wavelength: 940nm
 感应距离 1.2m Max.
 Sensing distance :1.2m Max.
 外壳尺寸 M18xL=62mm
 Housing size M18xL=62mm
 供电电压 10-30VDC
 Power supply : 10-30VDC
 输出方式 推挽式输出、4-20mA模拟量输出
 Output mode: push-pull, 4-20mA analog output
 保护 电源反接保护, 输出短路保护
 Reverse power source protection , Output short circuit protection
 连接 直接出线 Cable connect
 防护等级 Protection IP67

特点:TOF测距反射式, 感应距离灵活设定, 黑色物体无衰减, 物体有无、位置检测。
应用:物流设备、工厂自动化等行业
 Features: TOF distance measuring reflective type, flexible setting of sensing distance.No attenuation of black objects, detection of object presence and position.
 Application: logistics equipment, factory automation and other industries

P50D系列漫反射光电传感器

P50D series diffuse reflection photoelectric sensor
 感应原理 背景抑制型漫反射
 Sensing principle: background suppression diffuse reflection
 类型 TOF测距反射式
 Type: TOF Ranging Reflective
 波长 850nm
 Wavelength: 850nm
 感应距离 10m Max.
 Sensing distance :10m Max.
 外壳尺寸 50x50x17mm
 Housing size 50x50x17mm
 供电电压 10-30VDC
 Power supply : 10-30VDC
 输出方式 推挽式输出、4-20mA模拟量输出
 Output mode: push-pull, 4-20mA analog output
 保护 电源反接保护, 输出短路保护
 Reverse power protection , Output short circuit protection
 连接 直接出线 Cable connect
 防护等级 Protection IP67

特点:TOF测距反射式, 感应距离灵活设定, 黑色物体无衰减, 物体有无、位置检测。
应用:物流设备、工厂自动化设备、工业车辆、起重、电梯、门控等行业
 Features: TOF distance measuring reflective type, flexible setting of sensing distance.No attenuation of black objects, object presence and position detection.
 Application: logistics equipment, factory automation equipment, industrial vehicles,Lifting, elevator, door control and other industries

有线安全底边卡压保护系统

Wired Safety Bottom Edge Compression Protection System
 安全边缘光电传感器
 Safety edge photoelectric sensor
 感应原理 对射型
 Sensing principle:Through-beam
 组成:主控制器+副控制器+对射式光电传感器
 Composition: Main controller + sub-controller + through-beam photoelectric sensor
 感应距离 10米
 Sensing distance :10m Max.
 波长 红外光 880nm
 Wavelength: 880nm
 供电电压 10-30VDC
 Power supply : 10-30VDC
 输出方式 1*SPDT 继电器输出
 Output mode: Relay output 1 x SPDT
 连接:主控制器与副控制器通过螺旋电缆连接
 Connection: the main controller and the sub-controller are connected by a spiral cable
 光电传感器防护等级 IP67
 Photoelectric sensor Protection IP67
 灵敏度调节:自学习调整
 Sensitivity adjustment: self-learning adjustment

应用:工业门、托盘系统、机器人、工厂自动化设备、物流设备等
 Applications: Industrial doors, pallet systems, robots, factory automation Equipment, logistics equipment

TOFI 编码器
传感器

托菲传感技术(上海)股份有限公司

上海市虹口区水电路1422号2号楼804室
 200434
 021-65311020 65314120
 021-65311031
 138-1762-6600
 tofi@tofi-tech.com
 www.tofi-tech.com

TOFI Sensing Technology (Shanghai) Co.,Ltd

Room 804, Building 2, No.1422, Shuidian Road, Hongkou District
 Shanghai 200434 China
 Phone:+86 21 65311020
 FAX:+86 21 65311031
 Mobile:+86 138-1762-6600
 E-mail:tofi@tofi-tech.com
 Website:www.tofi-tech.com



扫一扫
关注微信公众号



扫一扫
关注托菲官网



ESK5004SK系列增量式编码器

ESK5004SK Series incremental Encoder
 感应原理 光电 Sensing method Optical
 外径 Housing size $\Phi 50\text{mm}$
 键槽轴 Solid shaft with key $\Phi 25\text{mm}$
 最大脉冲 Max. resolution 1200PPR
 工作电压 Supply voltage 5VDC, 5-30VDC, 9-26VDC
 防护等级 Protection IP54/IP65



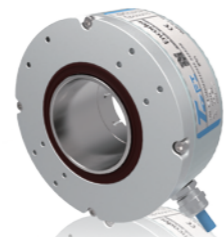
JSCA50系列绝对值编码器

JSCA50 series absolute encoder
 感应原理 磁性 Sensing method Magnetic
 功能原理 多圈 Functional principle Multiturn
 多圈技术 机械齿轮组 (无需电池)
 Multiturn technology Mechanical gears without batteries
 外径 Housing size $\Phi 50\text{mm}$
 轴径 实心轴 Solid shaft $\Phi 6, \Phi 8\text{mm}$
 分辨率 Max. resolution 22Bit
 每圈步数 Steps per turn 4096/12Bit
 圈数 Number of turn 1024/10Bit
 接口 Interface RS485, CANopen
 工作电压 Supply voltage DC5V, DC10-30V
 防护等级 Protection IP54, IP65



IE76H系列增量式编码器

IE76H Series incremental Encoder
 感应原理 光电 Sensing method Optical
 外径 Housing size $\Phi 78.5\text{mm}$
 空心轴 Hollow shaft $\Phi 12, \Phi 20, \Phi 25\text{mm}$
 最大脉冲 Max. resolution 2048PPR
 工作电压 Supply voltage 5VDC, 5-30VDC, 9-26VDC
 防护等级 Protection IP54



BDEEX100HA系列防爆编码器

BDEEX100HA series Explosion-proof Encoder
 Ex ib II C T4 Gb Ex tD A21 IP66 T80°C
 感应原理 光电 Sensing method Optical
 外径 Housing size $\Phi 101\text{mm}$
 轴径 Hollow shaft $\Phi 25, \Phi 30, \Phi 35, \Phi 38, \Phi 40, \Phi 42, \Phi 45\text{mm}$
 最大脉冲 Max. resolution 1500PPR
 工作电压 Supply voltage 10-28VDC
 防护等级 Protection IP66



BDEEX68SB系列防爆编码器

BDEEX68SB series Explosion-proof Encoder
 Ex ib II C T4 Gb Ex tD A21 IP66 T80°C
 感应原理 光电 Sensing method Optical
 外径 Housing size $\Phi 68\text{mm}$
 轴径 Supply voltage $\Phi 6, \Phi 8, \Phi 10\text{mm}$
 最大脉冲 Max. resolution 600PPR
 工作电压 Supply voltage 10-28VDC
 防护等级 Protection IP66

P50镜片反射型光电传感器

P50 Retroreflective photoelectric sensor
 感应距离 Sensing distance 5m, 7m, 10m 可选
 红外光 Infrared light 880nm
 带激光参考点 With laser reference point
 供电电压 Supply voltage 10-30VDC
 继电器输出 Relay output, 120VAC/2A or 24VDC/2A
 LED指示输出状态 LED indication of output state
 输出NO/NC可选 Output NPN N.O. or N.C.; PNP N.O. N.or N.C.
 电源反接保护 Reverse power source protection
 电缆线连接 Cable connect
 防护等级 Protection IP67



PKE15系列对射型光电传感器

PKE15 Through-beam photoelectric sensor
 感应距离 Sensing distance 9m
 红外光 Infrared light 940nm
 供电电压 Supply voltage 10-30VDC
 输出 Output 100mA, NPN N.O. or N.C.
 LED指示输出状态或电源ON
 LED indication of output state and power ON
 电源反接保护, 输出短路保护
 Reverse power source protection, Output short circuit protection,
 电缆线连接 Cable connect
 防护等级 Protection IP67



P1845系列对射型光电传感器

P1845 Through-beam photoelectric sensor
 感应距离 Sensing distance 10m、20m
 外形尺寸 Housing size M18 L=45mm
 红外光 Infrared light 850nm
 供电电压 Supply voltage 10-30VDC
 输出 Output 100mA, NPN or PNP N.O. or N.C. 可选
 LED指示输出状态或电源ON
 LED indication of output state and power ON
 电源反接保护, 输出短路保护
 Reverse power source protection, Output short circuit protection
 电缆线连接 Cable connect
 防护等级 Protection IP67



H1245系列HIMPS技术接近传感器

H1245 series HIMPS Proximity sensor
 感应物体 导磁性物体 Sensing object Magnetically conductive object
 外形尺寸 Housing size $\Phi 12, L=45\text{mm}$
 感应距离 Sensing distance $S_n=4\text{mm}$
 安装 齐平 Installation Flush
 工作电压 Operating Voltage 10-30VDC
 输出 Output 200mA, NPN or PNP N.O. or N.C.
 电源反接保护, 输出短路保护
 Reverse power source protection, Output short circuit protection
 工作温度 Operating temperature $-20\sim 70^\circ\text{C}$
 防护等级 Protection level IP67



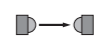
P50偏振镜片反射型光电传感器

P50 Polarized-Reflective Photoelectric Sensor
 感应距离 Sensing distance 6m Max.
 红光 Infrared ray, 650nm
 带激光参考点 With laser reference point
 供电电压 Supply voltage 10-30VDC
 继电器输出 Relay output 120VAC/2A or 24VDC/2A
 晶体管输出 Transistor output 100mA Max.
 LED指示输出状态 LED indication of output state
 NPN/PNP, NO/NC 可选 Output NPN N.O. or N.C.; PNP N.O. N.or N.C.
 电源反接保护 Reverse power source protection
 电缆线连接 Cable connect
 防护等级 Protection IP67



P12系列对射型光电传感器

P12 Retroreflective photoelectric sensor
 感应距离 Sensing distance: 6m、10m、15m、20m、25m
 红外光 Infrared light 940nm
 供电电压 Supply voltage 10-30VDC
 输出 Output: 100mA, NPN or PNP N.O. or N.C.
 LED指示输出状态或电源ON
 LED indication of output state and power ON
 电源反接保护, 输出短路保护, 输出反接保护
 Reverse power source protection, Output short circuit protection,
 电缆线连接 Cable connect
 防护等级 Protection IP67



PHRA76远程光电系统

PHRA76 Remote Photoelectric System
 远程传感器 PH12系列 Remote sensors PH12
 光电放大器 PHRA76系列 Photoelectric amplifier PHRA76
 检测距离 对射式 25m、漫反射式 0-3m
 Through-beam 25m, Diffuse reflective 0-3m
 红外光 Infrared light 940nm
 供电电压 Supply voltage 24VAC/DC $\pm 10\%$
 输出, 继电器 2xSPST Output, relay 2xSPST
 LED指示输出状态和电源ON LED indication of output state and power ON
 传感器尺寸 Sensor size $\Phi 12\text{mm}$
 1组或2组通道可选 1 or 2 sets of channels are selectable



无线底边卡压保护系统

Wireless Bottom Edge Compression Protection System
 无线控制距离 底边胶条外 10m、底边胶条内 7m
 Wireless control distance outside the bottom edge strip 10m, inside the bottom edge strip 7m.
 红外光 Infrared light 880nm
 主控制器供电电压 220VAC
 Main controller supply voltage 220VAC
 主控制器输出 1 x SPDT 240VAC/5A
 Main controller output 1 x SPDT 240VAC/5A
 副控制器供电 电池 Sub Controller powered by battery
 小门传感器侦测输入 Door-in-door sensor detection input
 2.4GHZ半工通信 Half duplex communication 2.4GHZ
 无线范围 Wireless range 10m
 电池供电时间 Battery Life >2 Years

