

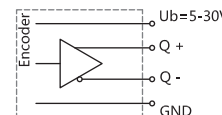
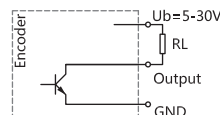
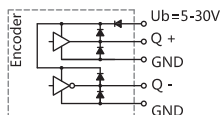
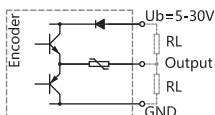


EHK105HK series	
Sensing method	optical
Housing size	Φ105mm
hollow keyway shaft	Φ16、Φ20、Φ25mm
Max. resolution	2500PPR
Supply voltage	5VDC, 5-30VDC, 9-26VDC
Protection	IP66

Mechanical characteristics

Shaft diameter	Φ16、Φ20、Φ25mm
Protection	IP66
Speed	6000RPM
Shaft loading	max. 100 N Axial; max. 300 N Radial
Shock resistance	100g, 3ms
Vibration resistance	10g, 10...2000HZ
Bearing life	10 ⁹ turns
Rotor moment of inertia	≈120×10 ⁻⁶ kgm ² (depends on dimension of axis)
Starting torque	<0.2Nm
Materials	Materials Flange :Stainless steel Solid shaft :Aluminium alloy Housing:Aluminium alloy
Working temperature	-40 C...+85 C
Storage temperature	-40 C...+85 C
Weight	approx.2.5kg

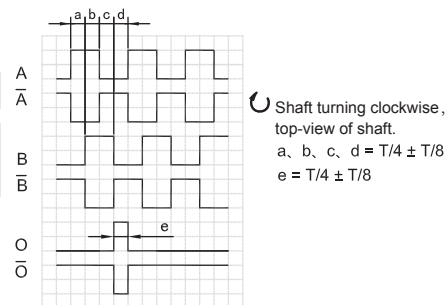
Electrical characteristics



Output circuit	Push-Pull	Push-Pull Differential	Open Collector	RS422 (TTL Compatible)
Pulse rate	max. 3000P/R	max. 3000P/R	max. 3000 P/R	max. 3000P/R
Supply voltage	5-30V	5-30V	5-30V	5-30V
Power consumption(no load)	max. 125 mA	max. 125 mA	max. 80 mA	max. 80mA
Permissible load/channel	max. ±80mA	max. ±80mA	max. -50mA	max. ±50mA
Pulse frequency	max. 100 KHz	max. 100 KHz	max. 100 KHz	max. 100 KHz
Signal level high	min. Ub-2.5V	min. Ub-2.5V	/	min. 2.5 V
Signal level low	max. 0.8V	max. 0.8V	/	max. 0.4V
Rise time Tr	max. 1 μs	max. 1 μs	/	max. 1 μs
Fall time Tf	max. 1 μs	max. 1 μs	/	max. 1 μs
Short circuit proof outputs	yes	yes	yes	yes

Terminal assignment

signal		OV	+Ub	A	\bar{A}	B	\bar{B}	O	\bar{O}	⏏
Cable Colour		WH	BN	GN	PK	YE	BU	GY	RD	Shield



Note: Positional relationship of O channel and A&B channels is not specified.

Ordering information

EHK105	XX	HK	20	E	1024	A	5-30	R	2	/	XXXX
	①	②	③	④	⑤	⑥	⑦	⑧	⑨		⑩

① Extended No. XX	② Shaft type HK: hollow+keyway	③ Shaft diameter 16 : 16mm 20 : 20mm 25 : 25mm	④ Channels B : A B C : A B O D : A \bar{A} B \bar{B} E : A \bar{A} B \bar{B} O \bar{O}	⑤ Pulse rate 500, 512,600 , 1000, 1024 ,1200, 2500	⑥ Output circuit F: Push-Pull A: Push-Pull Differential C: Open Collector B: RS422 (TTL Compatible)
----------------------	-----------------------------------	--	--	---	--

⑦ Supply voltage 5 : 5VDC 5-30 : 5...30VDC 9-26 : 9...26VDC	⑧ Exit position R: Radial	⑨ Connection type Figure: Cable length(m)	⑩ Special code XXXX
---	------------------------------	---	------------------------

Note: Printed in bold=standard items

Notes : 1 , mensioned resolution is in common use,others depend on real situation.

2 , pls confirm the model information : model series, axis dimension、 output channel、 resolution、 output form、 voltage、 outlet、 cable length、 connect type and special code.

Ordering example : EHK105HK20C1024F5-30R2 , pls specify the special demand at end.

Explanation : EHK105HK series , shaft diameter20mm , output A B O , 1024PPR , Push-pull , DC5-30V , radial direction2m.

Accessories (sold separately)

Note: Further stator coupling can be found in the accessories selection table.

Tether square
model (common) : 8162

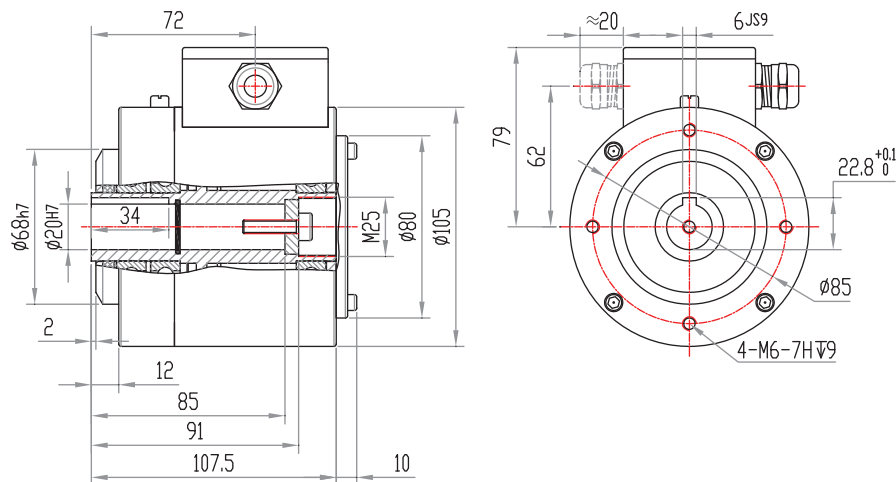


Tether arm, long
model (common) : 8561



Dimensions

EHK105HK



EHK105HK (client-side)

