

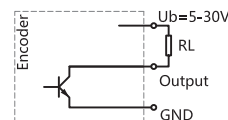
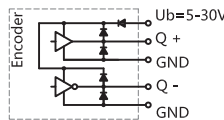
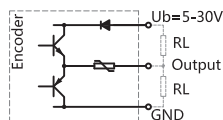


ESG66SM Series	
Sensing method	Optical
Housing size	Φ66 mm
Shaft diameter	M10 mm
Max. resolution	5000 PPR
Supply voltage	5VDC, 5-30VDC, 9-26VDC
Protection	IP54/IP65

Mechanical characteristics

Shaft diameter	M10mm
Protection	IP54/IP65
Speed	max. 5000 min ⁻¹
Shaft loading	max. 40 N Axial ; max. 80 N Radial
Shock resistance	100g, 6ms
Vibration resistance	10g, 10...2000HZ
Bearing life	10 ⁹ turns
Rotor moment of inertia	approx. 1.8×10 ⁻⁶ kgm ²
Starting torque	< 0.05 Nm
Materials	Flange: Aluminum alloy/Anodized aluminum alloy Solid shaft : Stainless steel Housing: Tensile iron shell + Black painted/Anodized aluminum alloy
Working temperature	-20 C...+70 C
Storage temperature	-40 C...+85 C
Weight	approx. 370g

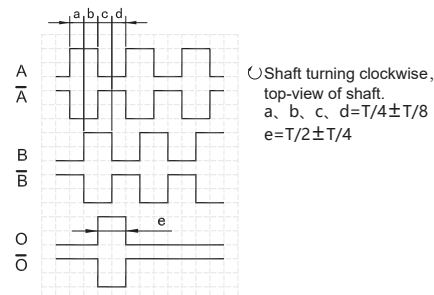
Electrical characteristics



Output circuit	Push-Pull	Push-Pull Differential	Open Collector
Pulse rate	max. 5000 P/R	max. 5000 P/R	max. 5000 P/R
Supply voltage	5-30V	5-30V	5-30V
Power consumption(no load)	max. 125 mA	max. 125 mA	max. 80 mA
Permissible load/channel	max. ±80 mA	max. ±80 mA	max. -50 mA
Pulse frequency	max. 300 KHz	max. 300 KHz	max. 300 KHz
Signal level high	min. Ub-2.5V	min. Ub-2.5V	/
Signal level low	max. 0.8V	max. 0.8V	/
Rise time Tr	max. 1μs	max. 1μs	/
Fall time Tf	max. 1μs	max. 1μs	/
Short circuit proof outputs	yes	yes	yes

Terminal assignment

Signal		OV	+Ub	A	\bar{A}	B	\bar{B}	O	\bar{O}	
Cable Colour		WH	BN	GN	PK	YE	BU	GY	RD	Shield



Note: Positional relationship of O channel and A&B channels is not specified.

Ordering information

ESG66 **XX** **SM** **10** **C** **360** **F** **5-30** **R** **2** / **XXXX**

① ② ③ ④ ⑤ ⑥ ⑦ ⑧ ⑨ ⑩

① Extended No. XX	② Shaft type SM: Threaded solid shaft	③ Shaft diameter 10: 10mm	④ Channels B: A B C: A B O D: A \bar{A} B \bar{B} - E: A A B B O O - F: A B O	⑤ Pulse rate 360,512,600,1000 1024,2000,2048,2500 3600,4096,5000
⑥ Output circuit F: Push-Pull A: Push-Pull Differential C: Open Collector	⑦ Supply voltage 5: DC5V 5-30: DC5...30V 9-26: DC9...26V	⑧ Exit position R: Radial C: Axial	⑨ Connection type Figure: Cable length(m)	⑩ Special code XXXX

Note: Printed in bold=standard items

Notes: 1, Pulse rates available at a short notice (360,512,600,1000,1024,2000,2048,2500,3600,4096,5000), other pulse rates on request.

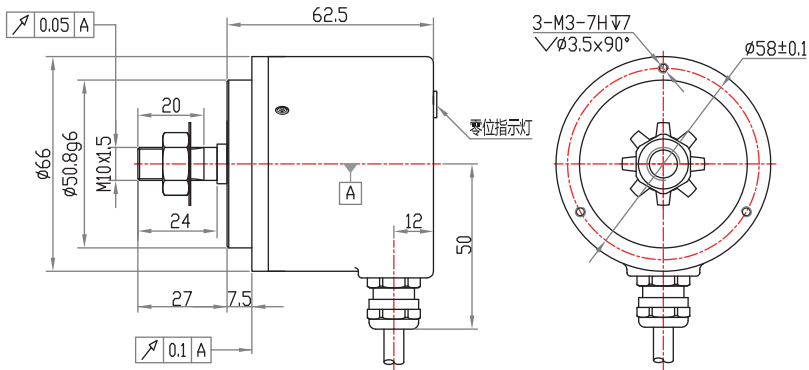
2, Please choose the ordering information: Extended No., Shaft diameter, Channels, Pulse rate, Output circuit, Supply voltage, Exit position, Cable length and Special code.

Ordering example: 1, ESG6601SM10C360F5-30R2

Explanation: ESG6601SM Series, Shaft diameter 10mm, Output channels A B O, 360PPR, Push-Pull, DC 5-30V, Radial Output 2m.

Dimensions

ESG6601SM



ESG6602SM

